

Ecology responsible

Lightness

Efficiency

Optimisation

Innovation

**SEMI-TRAILER
CATALOG**



Quality
Strenght

Stability

Robustness

MADE IN FRANCE

Welcome to BENALU ! Thanks to 50 years past experience within the transport of bulk products, our daily objective is to support our customers in a continuous improvement mode.

Quality of the design, weight reduction and product optimisation are our DNA to fulfill the customer requirements. Our whole range of semi-trailers is fully designed and manufactured in France.

We are delighted to introduce you to our range of semi-trailers and invite you to follow us onto our internet website www.benalu.com and our **Facebook page benalu** to know our latest news.



BENALU SAS

Rue Fresnel - BP 10002 - 62801 LIEVIN Cedex - France

Mail : contact@benalu.com

Tel : +33 (0)3 21 79 43 00

BENNES MARREL

Rond-Point Auguste Colonna 42161 - ANDREZIEUX-BOUTHEON Cedex BP 60064 - France

Mail : contact@bennesmarrel.com

Tel : +33 (0)4 77 55 99 30





DÉCOUVREZ
WWW.APIX-PARTS.COM

Find your official BENALU store online !

- Over 10 000 items available !
- 100% online website
- Instant **order taking**
- Search by vehicle serial number
- **Detailed visualisation** of all items
- Detailed and interactive **Shopping bag**
- **Vehicles** with drawings **exploded views**

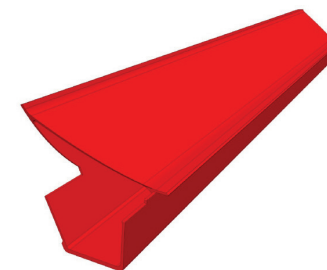
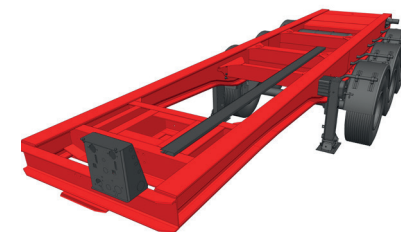
- Cover sheet
- Body Building
- Pneumatic components

- Hydraulic components

- Brakes
- Électricity
- Suspension

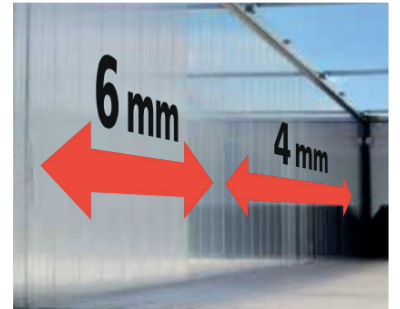
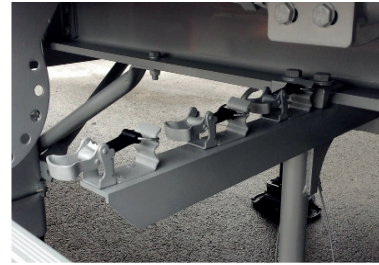
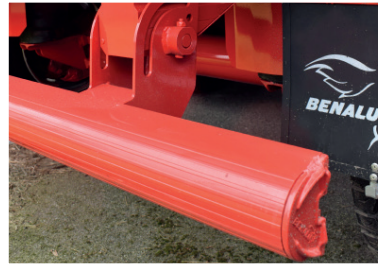
- Axles

- Landing legs
- Accessories

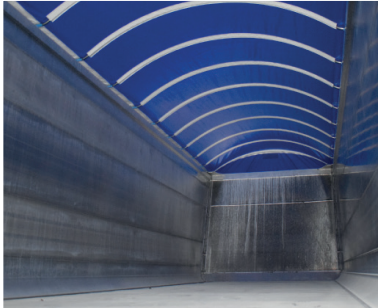




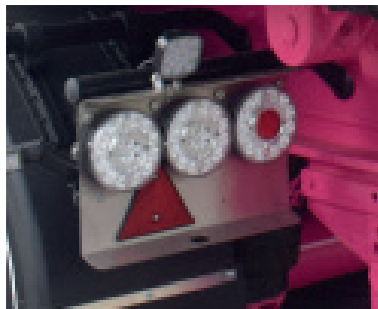
ONE TAILOR-MADE SERVICE



THE WIDEST CHOICE OPTIONS ON THE MARKET !



OVER 200 POSSIBLE OPTIONS



CONSTRUCTION

SIDERALE



RIGID RUNNER



AGRIBUSINESS

BULKLINER S



BULKLINER



OPTILINER



AGRILINER



JUMBOLINER Moving floor



JUMBORUNNER Moving floor



ENVIRONMENT

JUMBOTRACK Moving floor



BULKTRACK *Light*



BULKTRACK *R*



BULKLINER ULTRACUBE



SPECIFIC

INTERMODAL

TIMBERLINER



TRAILINER



MULTILINER FIX



MULTILINER TIP



BULKBOX CMB



BULKBOX CMP



more than **500** employees

more than **15** PATENTS

more than **2000** manufactured vehicles per year

45 % of export

The infographic consists of a central cluster of red hexagons containing text, surrounded by four smaller images: a green tractor in a field, a white truck, a blue and white industrial machine, and a white truck in a parking lot.



CONSTRUCTION

CONSTRUCTION





CONSTRUCTION

SIDERALE

**INNOVATION
BENALU**



RIGID RUNNER



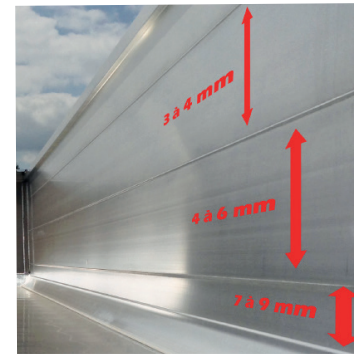


CONSTRUCTION

8

SIDERALE





AN OUTSTANDING TECHNOLOGY ! ALUMINIUM TIPPER FROM 25 UP TO 35 M³

- **Double skin profile** : Tipper aestheticism maintained, internal impacts not visible from outside
- **Thickness gradient** : Longevity improvement : Goods concentrated in the most impacted places
- **aluminium chassis** : Robust and suitable for uneven grounds.
- **Rear bumper** : Ultra compact, polyvalent which can easily be used with finisher

OPTIONS DESIGNED FOR AN OPTIMIZED UTILIZATION !

- Insulation system
- Longitudinal cover sheet on cable or side rolling with manual or electrical control
- Unlimited colors and customization
- Back doors according to your needs
- Many profile thicknesses (floor and side walls)
- ...

Have a look at our numerous options on www.benalu.com

Type : **Tipper**

Chassis : **Aluminium**

Body : **Aluminium**

Goods : **Sand, asphalt, earth, mud, gravel, ...**

Useful length : **From 7,5m up to 9,20m**

Useful height : **From 1,40m up to 1,56m**

Weight : **From 4750 kg**



**INNOVATION
BENALU**





Type : **Body on truck**

Sub-frame : **Aluminium**

Body : **Aluminium**

Goods : **Sand, asphalt, earth, mud, gravels, ...**

Useful length : **According to the truck capacity**

Useful height : **According to the truck capacity**

AN OUTSTANDING TECHNOLOGY ! BODY ON TRUCK TAILOR MADE

- **Double skin profile** : Tipper aestheticism maintained, internal impacts not visible from outside
- **Thickness gradient** : Increased longevity : Goods concentrated in the most impacted places
- **Aluminium sub-frame** : Fixed onto the truck chassis

OPTIONS STUDIED FOR AN OPTIMIZED UTILIZATION !

- Insulation system
- Longitudinal cover sheet on cable or side rolling with manual or electrical control
- Unlimited colors and customizations
- Back doors according to your needs
- Many profile thicknesses (floor and side walls)



Have a look at our numerous options on www.benalu.com



A COMPLETE RANGE OF STEEL BODIES ON RIGID TRUCKS!

INOVATION, ROBUSTNESS ET SECURITY ARE OUR KEY WORDS

Our steel body range on rigid trucks equipment is available on our website www.bennesmarrel.com, page construction !

Ask your catalog **BENNES MARREL** to your salesman* !

HARDOX
IN MY BODY

*contact available on french network on website

www.benalu.com

- Specific solutions adapted for your daily use!
- A meticulous design to match with your needs!
- A particular attention is given to facilitate the day-to-day use.
- Different possibilities of painting and customizing to your colors for a unique design !



CONSTRUCTION

11

BODY ON RIGID RANGE





AGRIBUSINESS

AGRIBUSINESS





AGRIBUSINESS

BULKLINER S INNOVATION
BENALU



BULKLINER



OPTILINER



AGRILINER



JUMBOLINER INNOVATION
BENALU



JUMBORUNNER





cover sheet EASYTARP patented

AN OUTSTANDING TECHNOLOGY ! ALUMINIUM TIPPER FROM 44 UP TO 64 M³

- **Double skin profile** : Tipper aestheticism maintained : internal impacts not visible from outside
- **Thickness gradient** : Increased longevity : goods concentrated in the most impacted places
- **Step frame aluminium chassis** for optimized volume and better stability
- **Integral flow** : Internal width of 2410 mm with any type of door

OPTIONS DESIGNED FOR AN OPTIMIZED UTILIZATION !

- Floor protection sheet for sticky products with straight front wall
- Side rolling cover sheet or EASYTARP™ electrical cover sheet system
- Unlimited colors and customizing
- Back doors according to your needs
- Many profile thicknesses
- ...



Type : Tipper

Chassis : Aluminium

Body : Aluminium

Goods : Agricultural products, fertilizers, small stones, sand

Useful length : From 9,70 m up to 11,50m

Useful height : From 1,90m up to 2,30 m

Weight : From 5500 kg

INNOVATION
BENALU

Have a look at our numerous options on www.benalu.com





Type : Tipper

Chassis : Aluminium

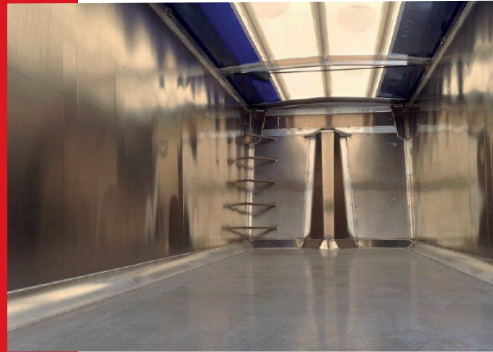
Body : Aluminium

Goods : Agricultural products, fertilizers,
small and middle scrap, quartering,
small stones, sand ...

Useful length : From 9,7 m up to 11,50m

Useful height : From 1,85m up to 2,20m

Weight : From 5300 kg



BULKLINER WITH RIBBED SIDE WALLS ! ALUMINIUM TIPPER FROM 43 UP TO 61 M³

- **Ribbed body** : Minimized deformation risk
- **Step-frame chassis** for an optimized volume and a better stability
- **Lightest possible weight** on the market for this type of vehicle!
- **Integral flow** : Internal width of 2410 mm with any type of door

OPTIONS DESIGNED FOR AN OPTIMIZED UTILIZATION !

- Floor protection sheet for sticky products on front straight wall
- EASYTARP™ electrical or lateral cover sheet system
- Special devices for quartering
- Back doors as per your needs
- Various profile thicknesses
- ...



www.benalu.com



Have a look at our numerous options on www.benalu.com

BULKLINER





Type : Tipper

Chassis : Aluminium

Body : Aluminium

Goods : Agricultural products, Euro pallets, fertilizers, big bags, large steel profiles

Useful length : From 9,5 m up to 13,30m

Useful height : From 1,85m up to 2,40m

Weight : From 5700 kg

THE HIGHLY VERSATILE VEHICLE FOR AGRICULTURE ! ALUMINIUM TIPPER FROM 43 UP TO 89 M³

- **Multipurpose vehicle** : Internal body angles designed for the transport of pallets (up to 33)
- **Optimized useful width** : 2480 mm suitable for euro pallets transport
- Side walls with various thicknesses to meet with your loading expectations
- **Aluminium step-frame chassis** for optimized volume and better stability

OPTIONS DESIGNED FOR AN OPTIMIZED UTILIZATION !

- Floor protection sheet for sticky products on front straight wall
- Side rolling cover sheet or EASYTARP™ electrical cover sheet system
- Unlimited colors and customizing
- Back doors according to your needs
- Many profile thicknesses
- ...

Have a look at our numerous options on www.benalu.com



OPTILINER





Type : Tipper

Chassis : Aluminium

Body : Aluminium

Goods : Agricultural products,
fertilizers, sand, earth, ...

Usefull lenght : From 8,80m up to 9,50m

Usefull height : From 1,70m up to 2,20m

Weight : From 5200kg



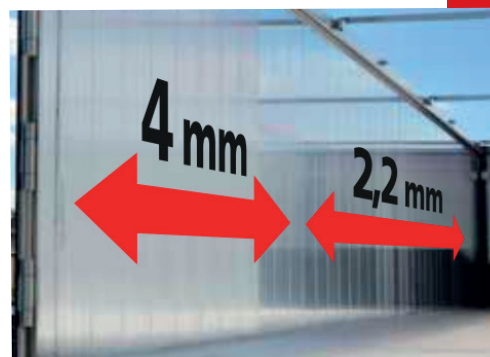
POLYVALENCY, LIGHTNESS AND ROBUSTNESS ! ALUMINIUM TIPPER FROM 36 UP TO 50 M³

- **Polyvalent tipper** for agricultural and public works
- **Aluminium chassis** : Robust and suitable for uneven grounds
- **Ribbed body or smooth sides** according to your needs
- **Integral flow** : Internal width of 2410 mm with any type of door (except hydraulic door)

OPTIONS DESIGNED FOR AN OPTIMIZED UTILIZATION !

- Sloped front wall with or without ram dog house
- Side rolling cover sheet or EASYTARP™ electrical cover sheet system
- Unlimited colors and customizing
- Back doors according to your needs
- Many profile thicknesses
- ...





Type : Mobile floor
 Chassis : Aluminium
 Body : Aluminium
 Goods : Agricultural products, Euro palettes, big bags, plants
 Useful length : 13,45 m
 Weight : From 6900 kg

VERSATILITY WITH HORIZONTAL UNLOADING OPERATION !
 ALUMINIUM WALKING FLOOR UP TO 96 M³

- **Walking Floor with unequalled pay load**
- Higher safety thanks to the unloading operation without tipping
- **Side walls** with various thicknesses to meet your loading requirements
- **Self-carrying chassis** : 100% aluminium
- **Trapezoidal body** for an optimized volume
- **Outstanding design** thanks to excellent finish

OPTIONS DESIGNED FOR AN OPTIMIZED UTILIZATION !

- Smooth or corrugated floor profile with various thicknesses
- Butterfly cover sheet, side rolling or EASYTARP™
- A great choice of colors and customization
- Standard or hydraulic back door
- Progressivity of the side wall thicknesses over the length
- ...

Have a look at our numerous options on www.benalu.com



**INNOVATION
 BENALU**





Type : Compact Mobile floor

Chassis : Aluminium

Body : Aluminium

Goods : Agricultural products,
euro pallets, big bags, plants

Useful length : 10 m

Weight : From 6600 kg



Hydraulic door version (in option)



THE COMPACT MOBILE FLOOR ! ALUMINIUM MOBILE FLOOR FROM 57 M³

- **Compact vehicle** to get access to the most difficult areas
- **Side walls** with various thicknesses to meet your loading requirements
- **Full chassis** 100% aluminium for higher robustness
- **Special floor** for specific transport of compost, fertilizers or plant waste

OPTIONS DESIGNED FOR AN OPTIMIZED UTILIZATION !

- Smooth or ribbed floor profile with various thicknesses
- Butterfly cover sheet, side rolling or EASYTARP™
- A great choice of colors and customization
- Standard or hydraulic back door
- Progressivity of the side wall thicknesses over the length





ENVIRONMENT





ENVIRONMENT

JUMBOTRACK



BULKTRACK *Light*

NEW

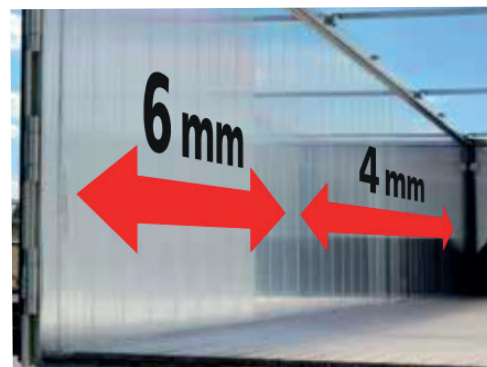


BULKTRACK *R*



BULKLINER ULTRACUBE





Type : Mobile floor

Chassis : Hybrid aluminium & steel

Body : Aluminium

Goods : Industrial and household waste, Euro pallet, small and middle-sized scrap, ...

Useful length : 13,42 m

Weight : From 7300 kg

THE REINFORCED MOVING FLOOR ! ALUMINIUM MOBILE FLOOR UP TO 96 M³

- Side walls with various thicknesses to meet your loading requirements
- Integral hybrid reinforced chassis (steel & aluminium)
- Trapezoidal body for an optimized volume
- Reinforced floor suitable for waste transport
- Higher safety thanks to the unloading operation without tipping

OPTIONS DESIGNED FOR AN OPTIMIZED UTILIZATION !

- Smooth or ribbed floor profiles with various thicknesses
- Butterfly cover sheet, side rolling or EASYTARP
- Steel rear bumper
- Standard or hydraulic back door
- Progressivity of the side wall thicknesses over the length



INNOVATION
BENALU

Have a look at our numerous options on www.benalu.com



Type : Tipper
Chassis : Aluminium
Body : Steel

Goods : Industrial waste, scrap, ...
Usefull length : 10,40m and 11,40m
Useful hight : from 2.20m at 2,40m
Weight : from 7400kg (55m³)



THE LIGHT VERSION OF THE BIG VOLUME SCRAP TIPPER ! 50 AT 60M³ STEEL STIPPER

NEW



- **Reinforced steel body:** reinforced design with complete ring line.
- **Controlled weight** thanks to a payload-centered design
- **Rounded body** ideal for stability and scrap unloading
- **Reinforced aluminium chassis** specially adapted to scrap transportation
- **Barn type rear door** without upper cross-member section

OPTIONS DESIGNED FOR AN OPTIMIZED UTILIZATION !

- Bâchage avec renfort spéciale feraille
- Couleurs et personnalisations illimitées
- Profil de protection de bâchage enroulée
- Différentes types d'équipements
- ...

www.benalu.com

Have a look at our numerous options on www.benalu.com



ENVIRONMENT

23

BULKTRACK *Light*





Type : Tipper
 Chassis : Aluminium
 Body : Steel
 Utilization : Industrial and household waste,
 big scrap
 Useful length : From 10,60 m up to 12,40 m
 Useful height : 2,30 m
 Weight : From 8450 kg

AN OPTIMIZED ROBUSTNESS FOR SCRAP TRANSPORT !
STEEL TIPPER FROM 57 UP TO 67 M³

- **HB 450 THLE steel body** with high resistance to shocks and abrasion
- **Side walls** with central ribs assembled by laser welding
- **Straight aluminium chassis** for an unequalled payload
- **Barn type door without upper cross member** for safe unloading operation

OPTIONS DESIGNED FOR AN OPTIMIZED UTILIZATION !

- Body reinforcement (floor and side walls)
- A great choice of colors and customization
- Back door with pneumatic unlocking device
- cover sheet system with a net design or side rolling
- Additional equipment
- ...



BULKTRACK R



Have a look at our numerous options on www.benalu.com





Type : Tipper

Chassis : Aluminium

Body : Aluminium

Utilization : Industrial and household waste, scrap, ...

Body design : Trapezoidal

Useful length : From 10,60 m up to 11,30 m

Weight : From 6800 kg



THE COMBINATION BETWEEN ROBUSTNESS AND PAYLOAD ! REINFORCED TIPPER FROM 64 UP TO 68 M³

- **Highly reinforced body** : Side wall rib doubling on last third of the body
- **Trapezoidal body** for an optimized volume
- **Aluminium step-frame chassis** for an optimized volume and a higher stability
- **Sloped floor** for an easier outflow

OPTIONS DESIGNED FOR AN OPTIMIZED UTILIZATION !

- side wall rib doubling on the last third or on the full length!
- Straight or sloped front wall according to your needs
- EASYTARP™ or side rolling cover sheet system
- A great choice of colors and customization
- Back doors according to your needs
- Many profile thicknesses
- ...





FIXED CONTAINER CHASSIS SUITABLE FOR ISO CONTAINERS FROM 20' TO 40'

- **Vehicle benefiting from all the BENALU knowledge and know-how** in terms of ergonomics, resistance and payload
- **100% aluminium straight** chassis with a remarkable durability designed with the best alloys on the market
- **Track center distance** studied to optimize the stability of the rolling set.
- Positions of twist locks tailored to your needs (example: 2x20', 1x20', 1x30')

OPTIONS DESIGNED FOR AN OPTIMIZED UTILIZATION !

- 100% aluminium fixed walkway
- Versatile rear part that fits all containers
- Specific device for mobile silo
- Additional equipment according to your needs: tool box, working lights, ...



Type: Fixed container chassis
Material: Aluminium
Size: 20', 30', 40'
Utilization: Intermodal
Approved for combined transport

Type: **Tipping container chassis**

Material: **Aluminium**

Adaptability: **20', 30', 40'**

Utilization: **Intermodal**

Approved for combined transport



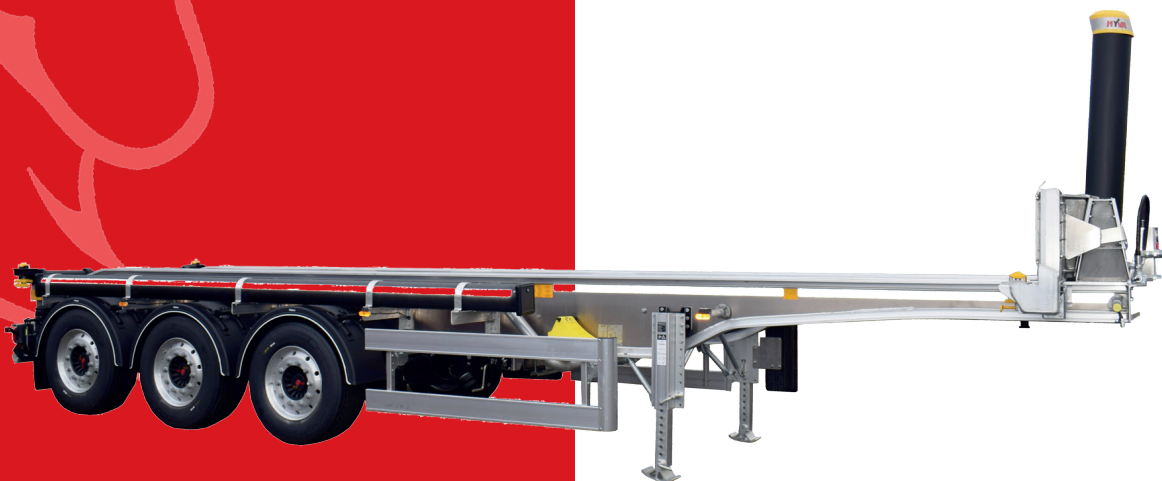
TIPPING CONTAINER CHASSIS

Suitable for ISO containers from 20' to 40'

- **Vehicle benefiting from all the BENALU knowledge and know-how** in terms of ergonomics, resistance and payload
- Extremely robust handmade aluminium apron!
- **100% aluminium straight chassis** with a remarkable durability designed with the best alloys on the market
- Positions of twist locks tailored to your needs (example: 2x20', 1x20', 1x30')

OPTIONS DESIGNED FOR AN OPTIMIZED UTILIZATION !

- 100% aluminium fixed walkway
- Versatile rear part that fits all containers
- Specific device for mobile silo
- Additional equipment according to your needs: tool box, working lights, ...



INTERMODAL

27

MULTILINER TIP



Type: Container with tarpaulin
 Material: Aluminium
 Size: 30', 40', 40'+
 Utilization: Intermodal
 Approved for combined transport

CONTAINER WITH TARPAULIN CONTAINERS FROM 30' TO 40'+

- **Adaptable to your needs:** container with tarpaulin specially designed for bulk transportation
- **3 sizes:** 30', 40' and 40'+
- **Use of the best alloys on the market** and preserved payload!
- **Weight optimisation** thanks to simplified assemblies and ribbed body profiles.
- **Increased stiffness via strengthening points**

OPTIONS DESIGNED FOR AN OPTIMIZED UTILIZATION !

- Ground controlled lateral cover sheet system and cover sheet holders
- Food Defense: funnel-type inner angle profiles
- Adapted to different types of handling: pliers or spreader
- Various equipment: hazardous product plates, document holder,...



Type: «closed» container

Material: Aluminium

Size: 30', 40', 40'+

Use: Intermodal (food transport)

Approved for combined transport



«CLOSED»-TYPE CONTAINER CONTAINERS FROM 30' TO 40'+

- **Adaptable to your needs:** fully closed container with discharge valves suitable to your needs
- **3 sizes:** 30', 40' et 40'+
- **Use of the best alloys** on the market and preserved payload!
- **Weight optimisation** thanks to simplified assemblies and ribbed body profiles.
- **Increased stiffness by reinforcement points**

OPTIONS DESIGNED FOR AN OPTIMIZED UTILIZATION !

- Upper part closed by sheet metal and stiffeners
- Food Defense: funnel-type inner angle profiles
- Adapted to different types of handling: pliers or spreader
- Various equipment: hazardous product plates, document holder,...





SPECIFIC

SPECIFIC





SPECIFIC

TIMBERLINER



TRAILINER





SPECIFIC

32



Type : **Drawbar**
 Chassis : **Aluminium**
 Body : **Aluminium**
 Utilization : **Civil works and agribusiness**
 Length : **Tailored**
 Height : **Tailored**

STABILITY AND PAYLOAD ! 100% ALUMINIUM DRAWBAR TRAILER

- **Customized design matching with your needs** : Public works or agricultural tipper
- **100% aluminium chassis** with an outstanding longevity
- **Double skin profile** : Tipper esthetism maintained, internal impacts not visible from outside

OPTIONS STUDIED FOR AN OPTIMIZED UTILIZATION !

- Landing legs, axles, rims, tires according to customer request
- Smooth or ribbed side walls
- Unlimited colors and customization
- Back doors according to your needs
- Many profile thicknesses (floor and side walls)
- ...

Have a look at our numerous options on www.benalu.com



TRAILINER





WOOD
TRANSPORT

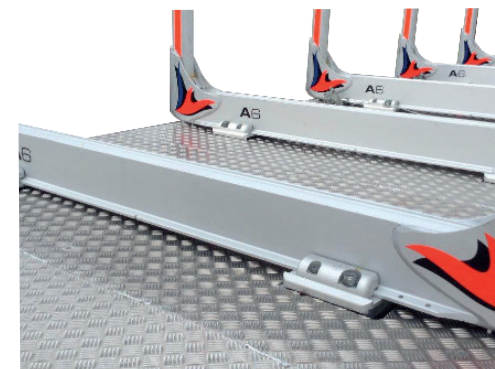
33

Type : Platform for wood
transportation

Chassis : Aluminium

Length : 13,50 m

Utilization : Wood transport



AN OUTSTANDING ROBUSTNESS !

THE TIMBERLINER HAS BEEN DESIGNED FOR A MAXIMUM USEFUL LIFE

- **100% aluminium chassis** especially focused on stability and robustness
- **Front wall with available in various heights**
- **Protection sheet on central part**
- **Strong stakes** especially designed for loadings

OPTIONS DESIGNED FOR AN OPTIMIZED UTILIZATION !

- Landing legs, rims, tires according to customer request
- Self-steering axles
- Various types of stakes (aluminium or steel)
- unlimited number of colors and customizations.
- ...

TIMBERLINER



